

MEOW MIX POST-MIX GRINDING RENOVATION



Owner

Meow Mix Decatur
Production I, LLC

Size/Capacity

Twin post-mix grind
hammermill systems

Completion Time

6 months

Younglove's Services

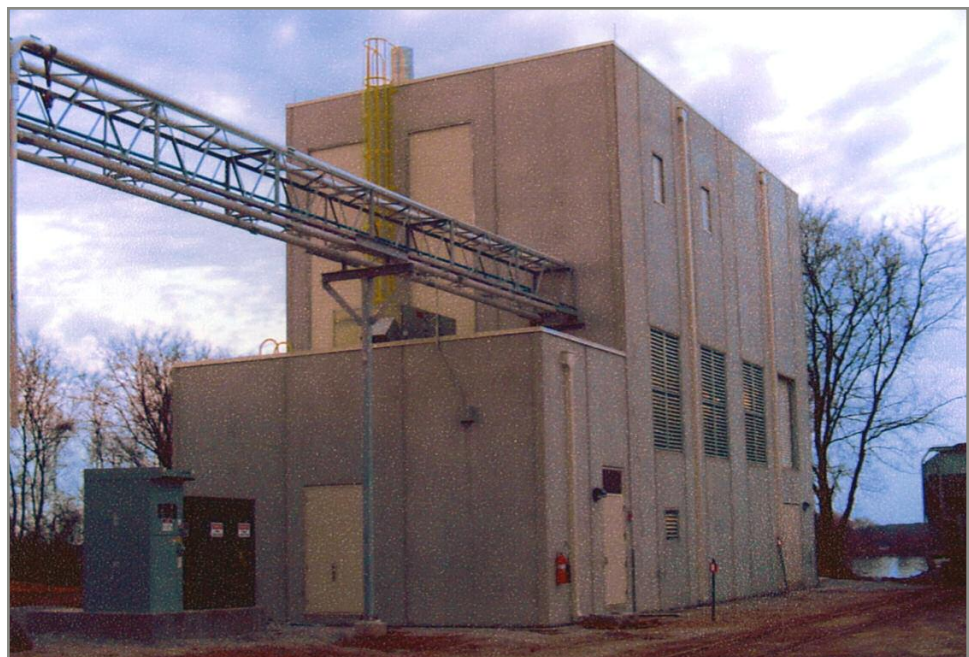
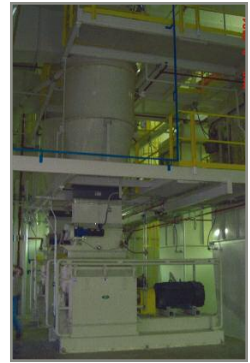
- Conceptual design
- Structural engineering
- General construction
- Construction management
- Equipment installation

Decatur, Alabama

This project upgraded the capacity and quality of Meow Mix's post-mix grinding operation, allowing not only for serving today's production requirements but also providing the capability of adding two lines to meet future production demands.

A new 30-foot-wide by 57-foot-long by 42-foot-tall precast concrete building houses the new grinding equipment, and a new 15-foot-wide by 30-foot-long by 15-foot-tall electrical equipment room was constructed next to the production area. As the finished product is pet food, this facility was constructed as a food-grade plant.

Twin independent grinding systems allow Meow Mix to grind two different formulations at any given time. Younglove installed a 160-foot-long truss bridge to carry eight pneumatic transfer lines between the existing facility and the new hammermill building. To aid in quality control measures, Younglove also installed a sampling and screening system under each grinding system to verify grind size.



YOUNGLOVE

*Builders of value...
Builders of trust*

Leaders in the design and construction of bulk materials handling facilities